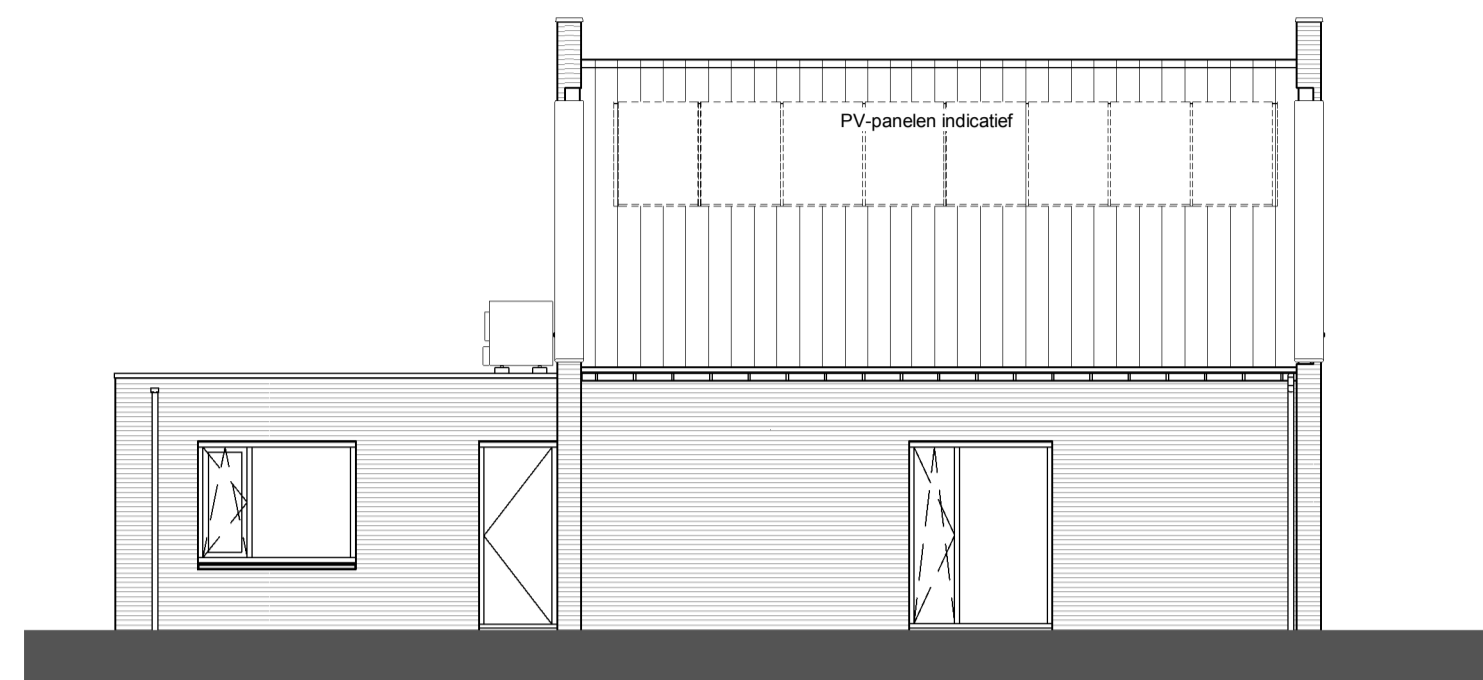


Situatie-overzicht



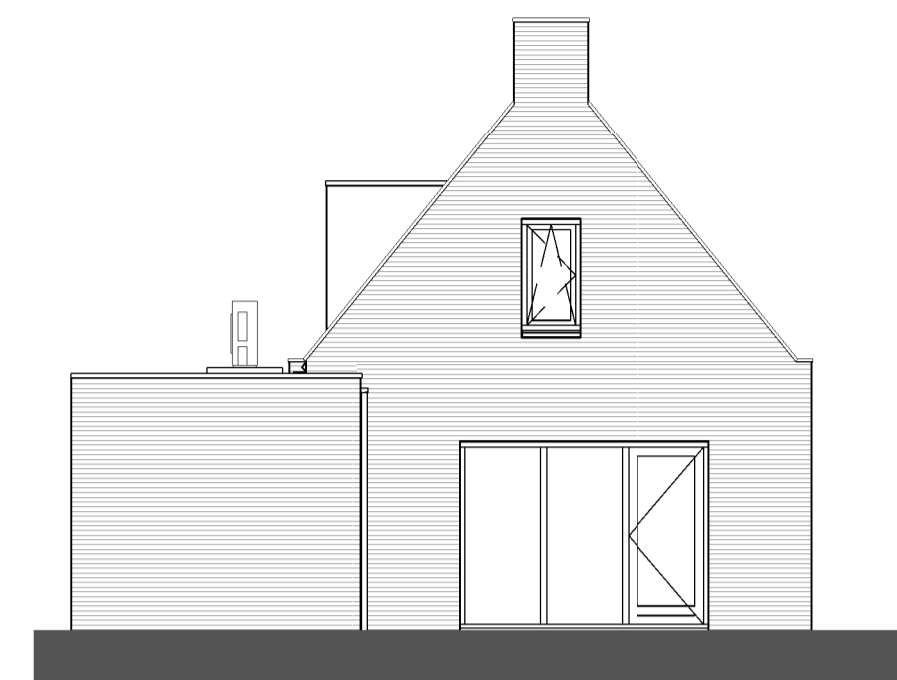
Voorgevel

1 : 100



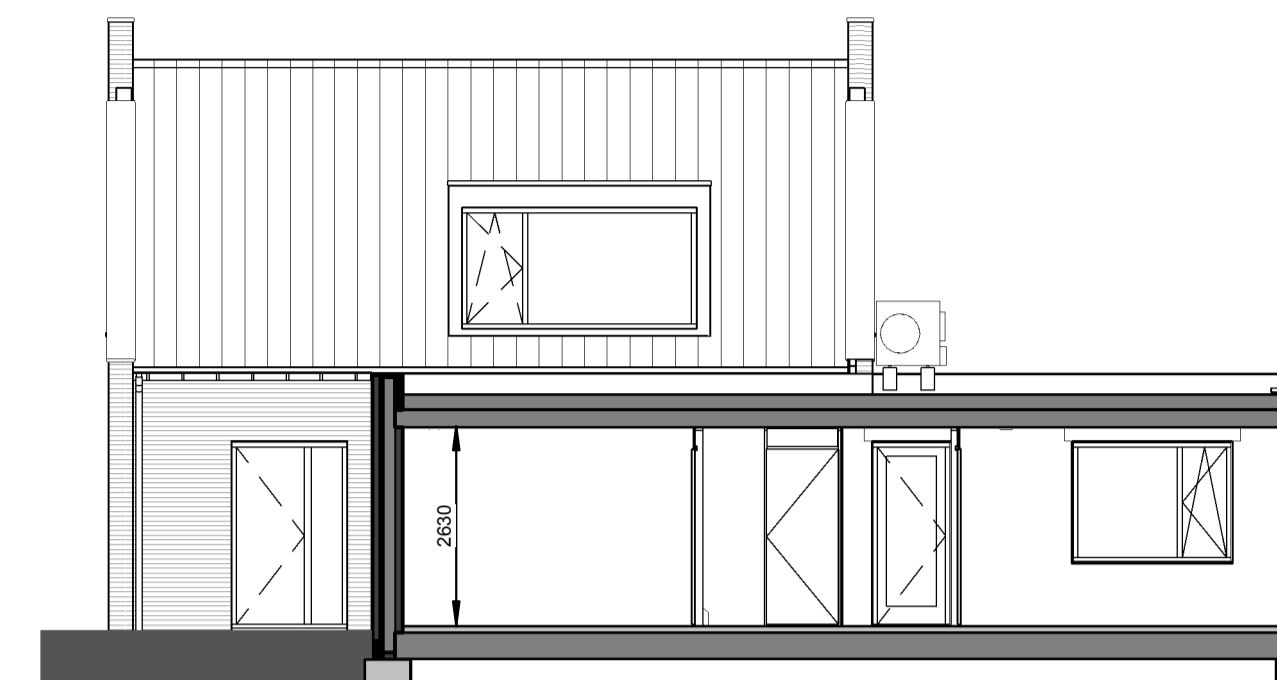
Linkergevel

1 : 100



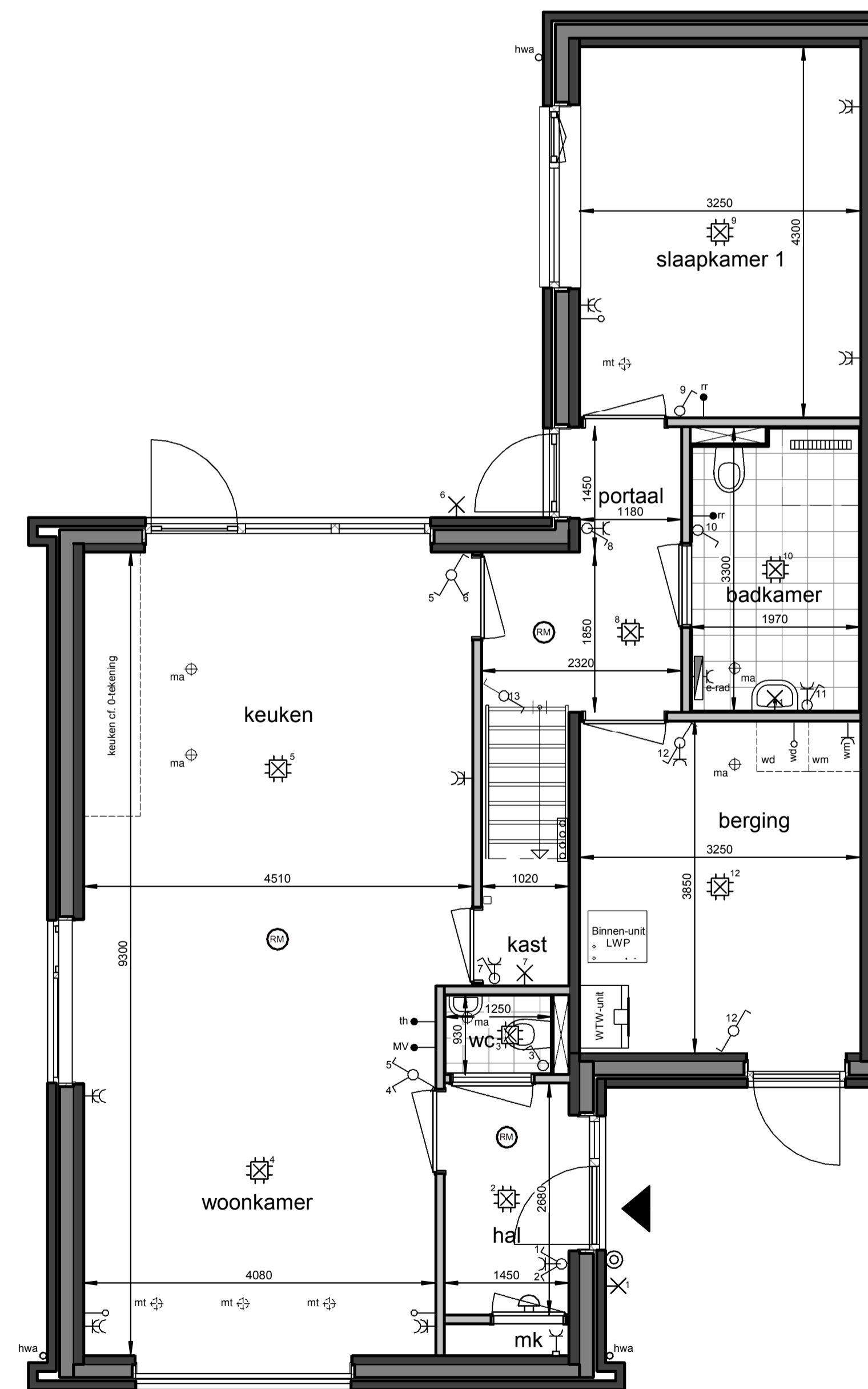
Achtergevel

1 : 100



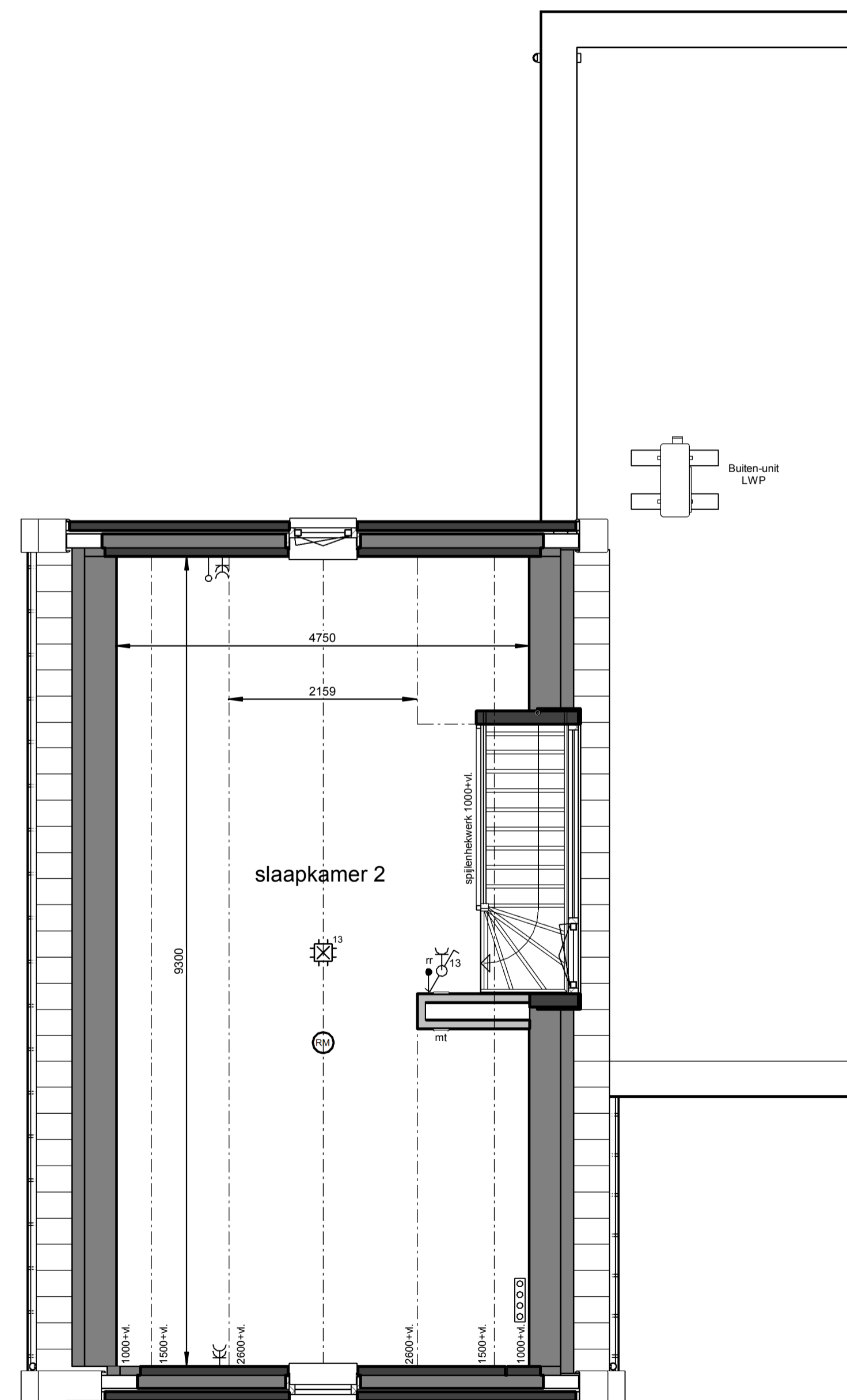
Rechtergevel

1 : 100



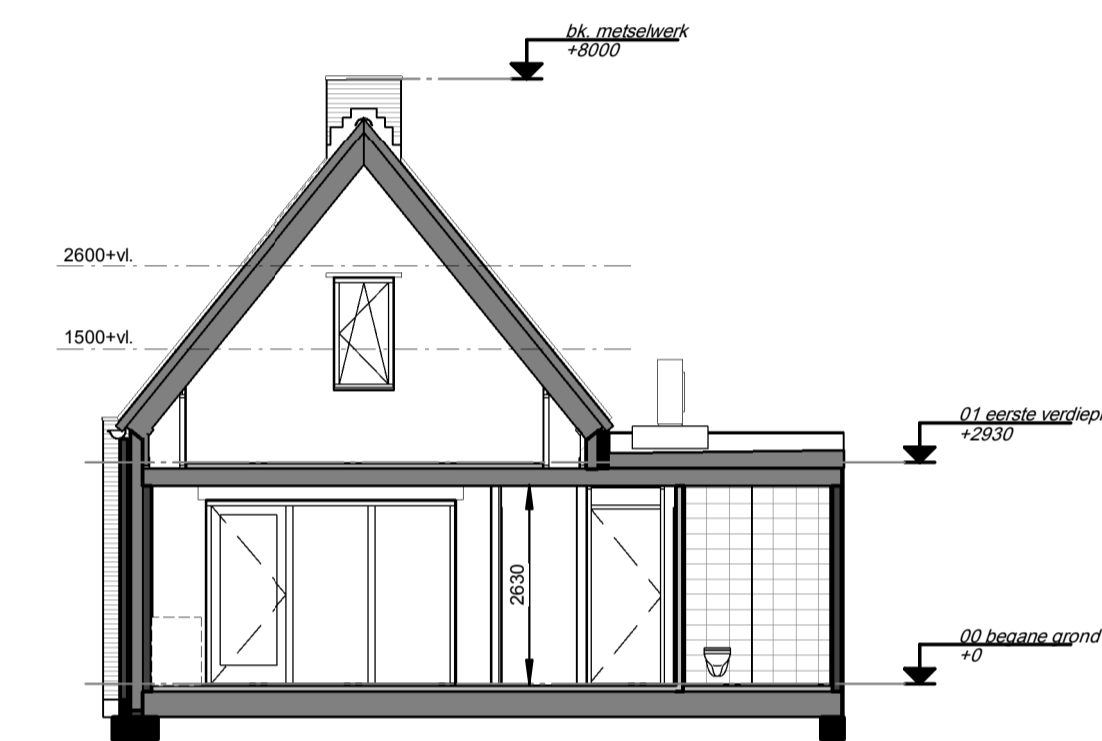
Begane grond

1 : 50



Eerste verdieping




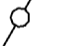








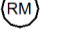

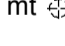
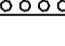



1 : 50



Doorsnede

1 : 100

**Renvooi**

-  plafond-lichtpunt
-  wand-lichtpunt
-  enkele schakelaar
-  wisselschakelaar
-  enkele wandcontactdoos
-  dubbele wandcontactdoos
-  bediening thermostaat
-  bediening MV
-  ruimteregelaar
-  loze leiding
-  beldrukker
-  schel, voordeur bel
-  rookmelder
-  ma ⊕ plafond-afvoerventiel mechanische ventilatie
-  mt ⊕ plafond-toevoerventiel mechanische ventilatie
-  verdeler vloerverwarming
-  E-radiator
-  opstelplaats wasmachine / wasdroger
-  entree woning

Maatvoering in plattegronden zijn 'circa' maten.  
 Leidingen en kanalenverloop conform opgave installateur.  
 Elektra en installaties worden conform opgave installateur uitgevoerd.  
 Posities ventielen mechanische ventilatie zijn indicatief.  
 Posities WP, WTW en omvormer zijn indicatief.  
 Zonnepanelen indicatief weergegeven, aantal conform berekening.

**Roermond, 12 woningen Neeldervelt**

Woningtype W1 - Verkooptekening  
 bnr. 173, 179 en 168, 174 gespiegeld

datum: 16-05-2023 schaal: 1:100 / 1:50 papierformaat: A1 tekening: B-VK-W1-0