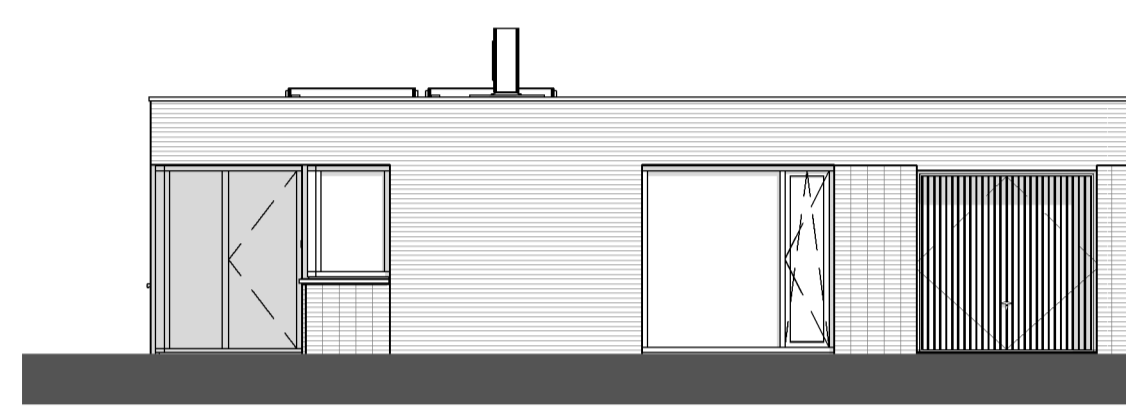
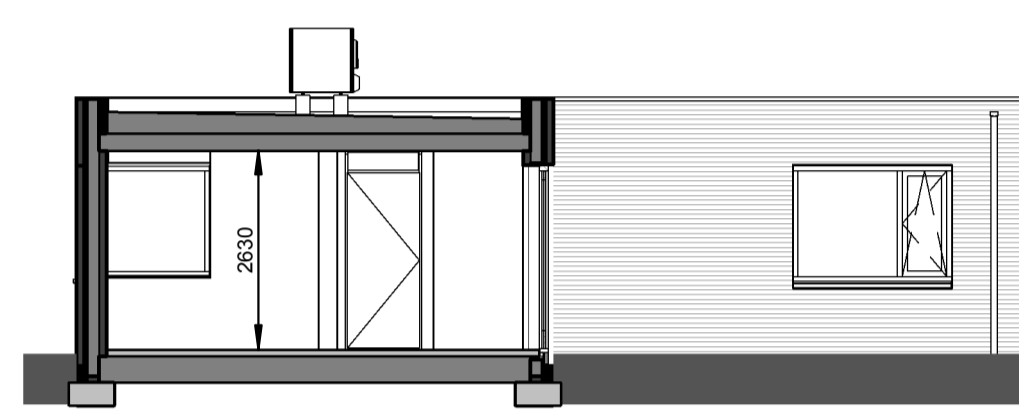


Situatie-overzicht



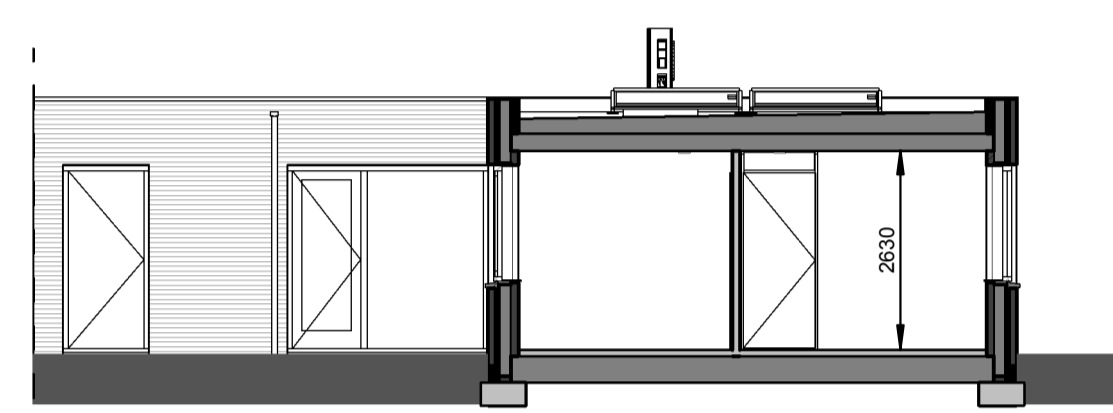
Voorgevel

1 : 100



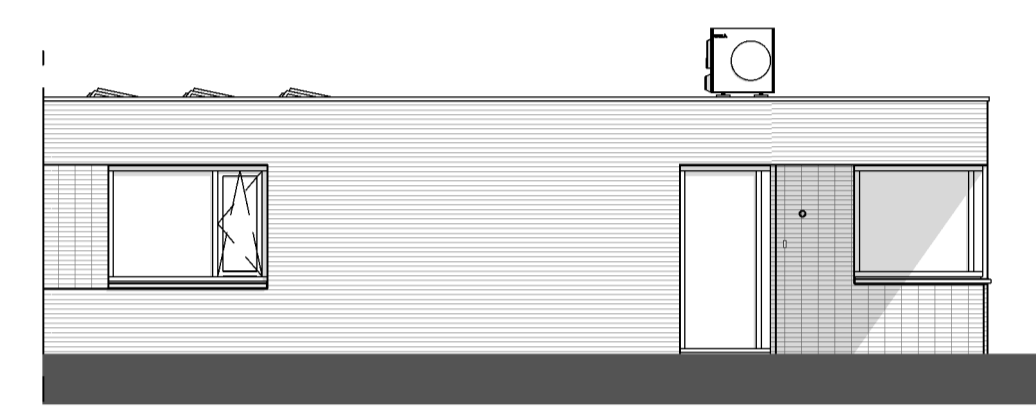
Rechtergevel

1 : 100



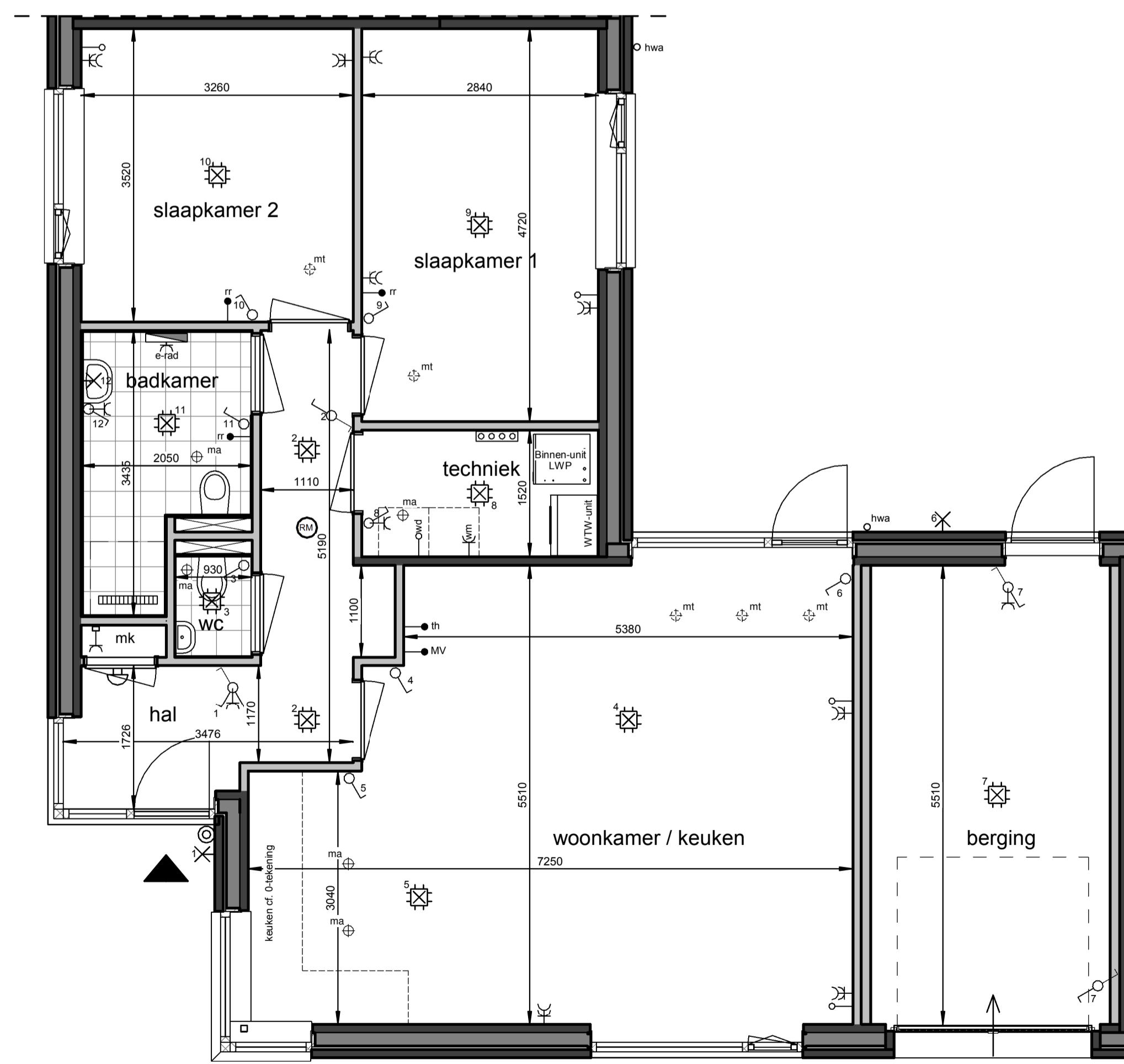
Achtergevel

1 : 100



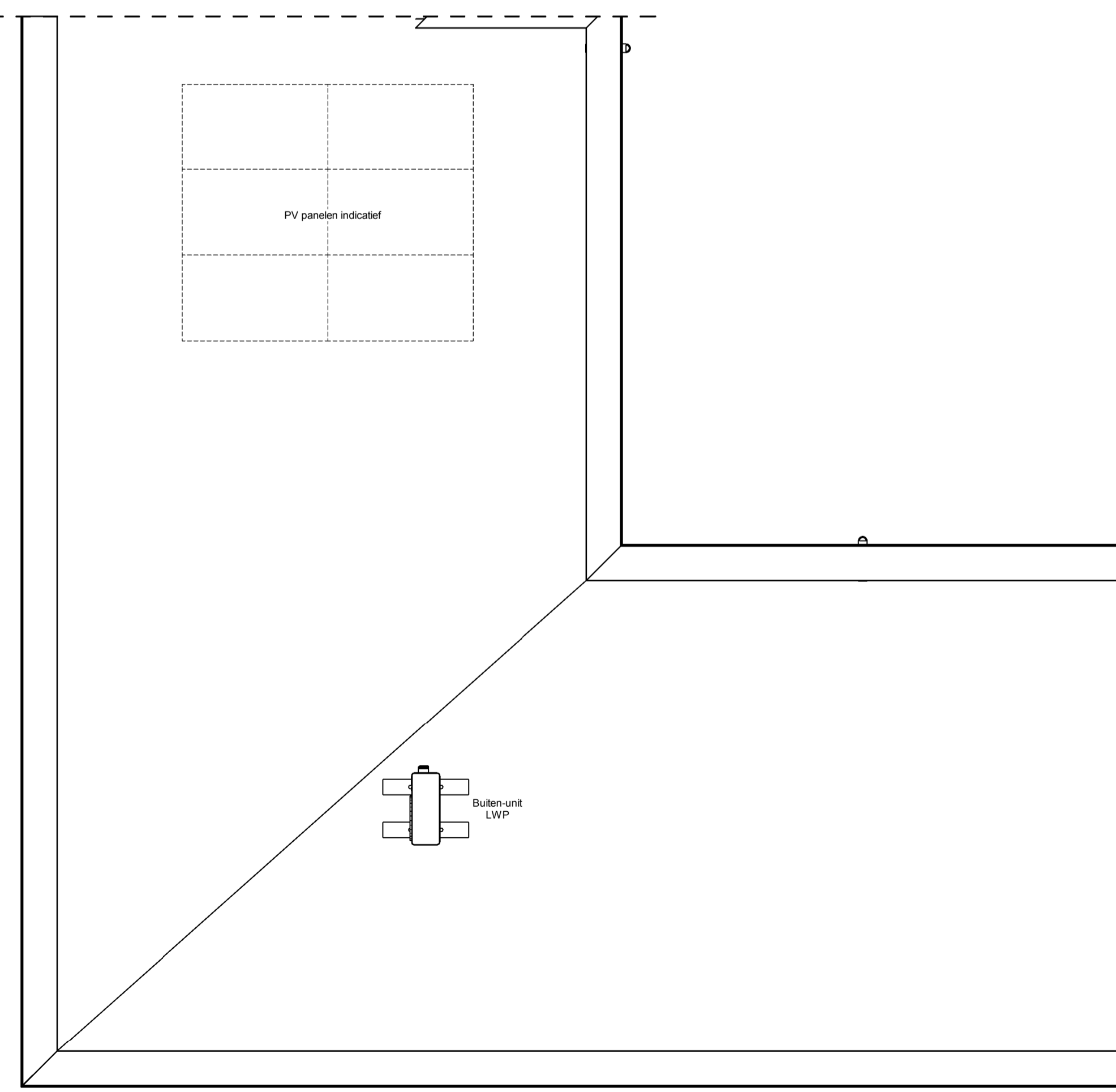
Linkergevel

1 : 100



Begane grond



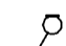
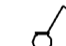
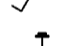










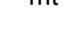
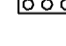

1 : 50



Eerste verdieping

1 : 50

Renvooi

-  plafond-lichtpunt
-  wand-lichtpunt
-  enkele schakelaar
-  wisselschakelaar
-  enkele wandcontactdoos
-  dubbele wandcontactdoos
-  bediening thermostaat
-  bediening MV
-  ruimteregelaar
-  loze leiding
-  beldrucker
-  schel, voordeur bel
-  rookmelder
-  ma ⊕ plafond-afvoerventiel mechanische ventilatie
-  mt ⊕ plafond-toevoerventiel mechanische ventilatie
-  verdelers vloerverwarming
-  E-radiator
-  opstelplaats wasmachine / wasdroger
-  entree woning

Maatvoering in plattegronden zijn 'circa' maten.
 Leidingen en kanalenverloop conform opgave installateur.
 Elektra en installaties worden conform opgave installateur uitgevoerd.
 Posities ventilatie mechanische ventilatie zijn indicatief.
 Posities WP, WTW en omvormer zijn indicatief.
 Zonnepanelen indicatief weergegeven, aantal conform berekening.

Roermond, 28 woningen Neeldervelt

Woningtype P2 - Verkooptekening bnr. G2 en G4
 datum: 16-05-2023 schaal: 1:100 / 1:50 papierformaat: A1 tekening: B-VK-P2-0