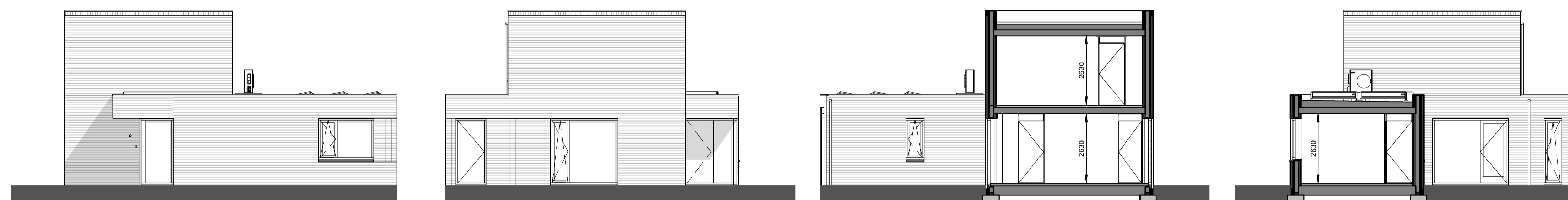


Situatie-overzicht



Rechtergevel

1 : 100

Voorgevel

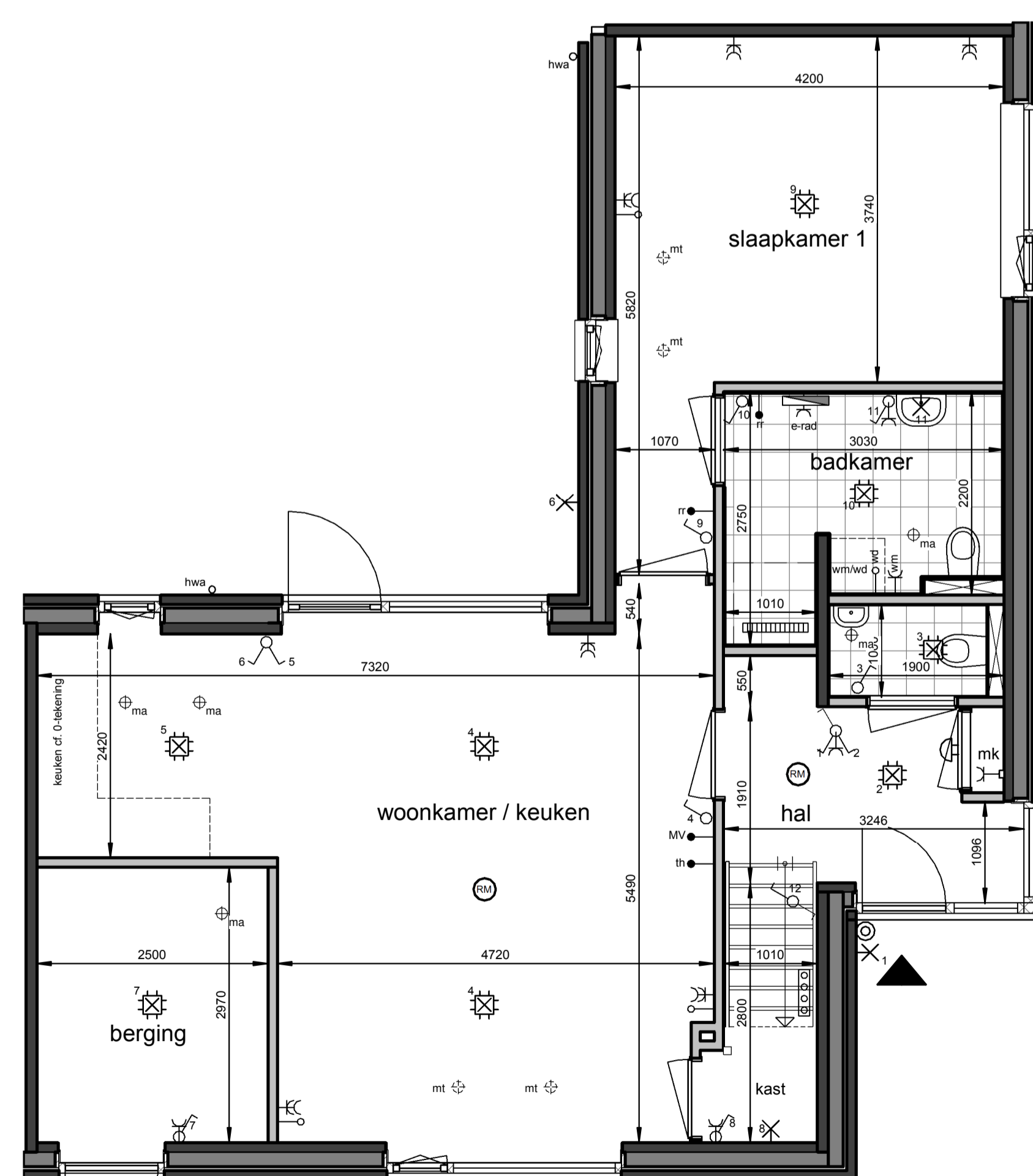
1 : 100

Linkergevel

1 : 100

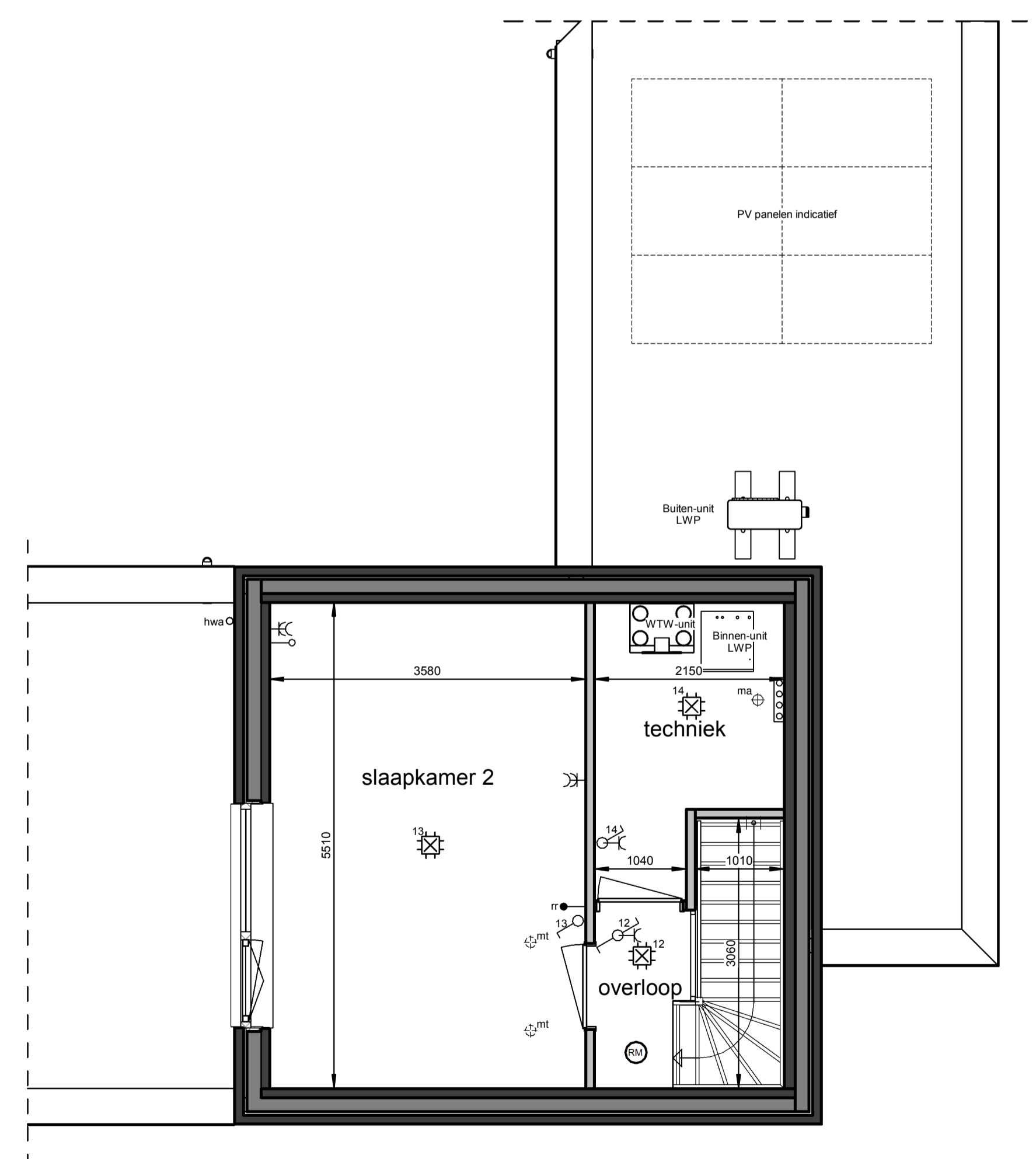
Achtergevel

1 : 100



Begane grond

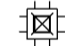

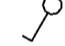









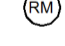
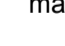
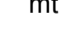
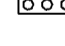



1 : 50



Eerste verdieping

1 : 50

Renvooi

-  plafond-lichtpunt
-  wand-lichtpunt
-  enkele schakelaar
-  wisselschakelaar
-  enkele wandcontactdoos
-  dubbele wandcontactdoos
-  bediening thermostaat
-  bediening MV
-  ruimteregelaar
-  loze leiding
-  beeldrukker
-  schel, voordeur bel
-  rookmelder
-  ma ⊕ plafond-afvoerventiel mechanische ventilatie
-  mt ⊕ plafond-toevoerventiel mechanische ventilatie
-  verdeler vloerverwarming
-  E-radiator
-  opstelplaats wasmachine / wasdroger
-  entree woning

Maatvoering in plattegronden zijn 'circa' maten.
 Leidingen en kanalenverloop conform opgave installateur.
 Elektra en installaties worden conform opgave installateur uitgevoerd.
 Posities ventielen mechanische ventilatie zijn indicatief.
 Posities WP, WTW en omvormer zijn indicatief.
 Zonnepanelen indicatief weergegeven, aantal conform berekening.

Roermond, 28 woningen Neeldervelt

Woningtype P1 - Verkooptekening bnr. G1 en G3
 datum: 16-05-2023 schaal: 1:100 / 1:50 papierformaat: A1 tekening: B-VK-P1-0