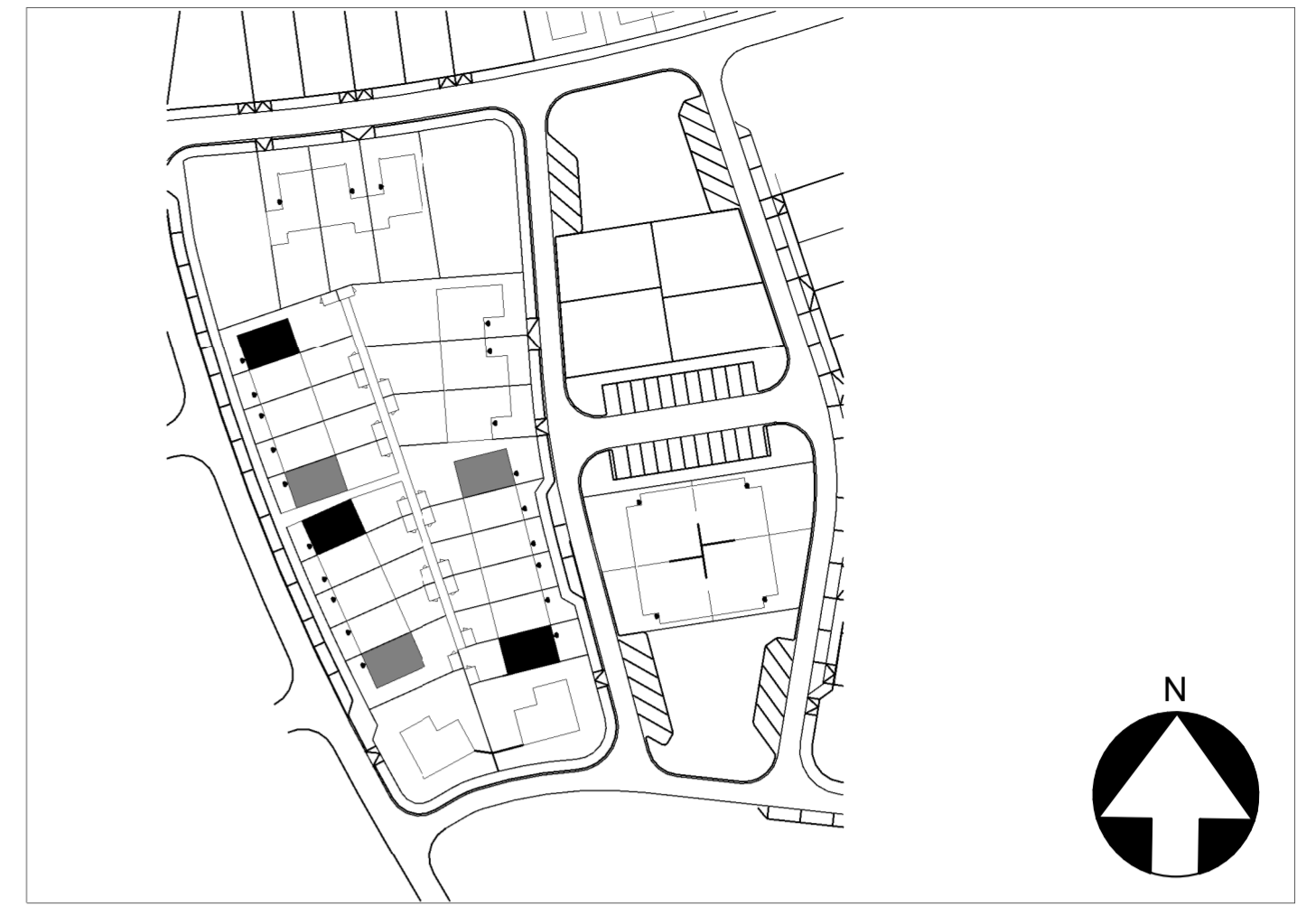
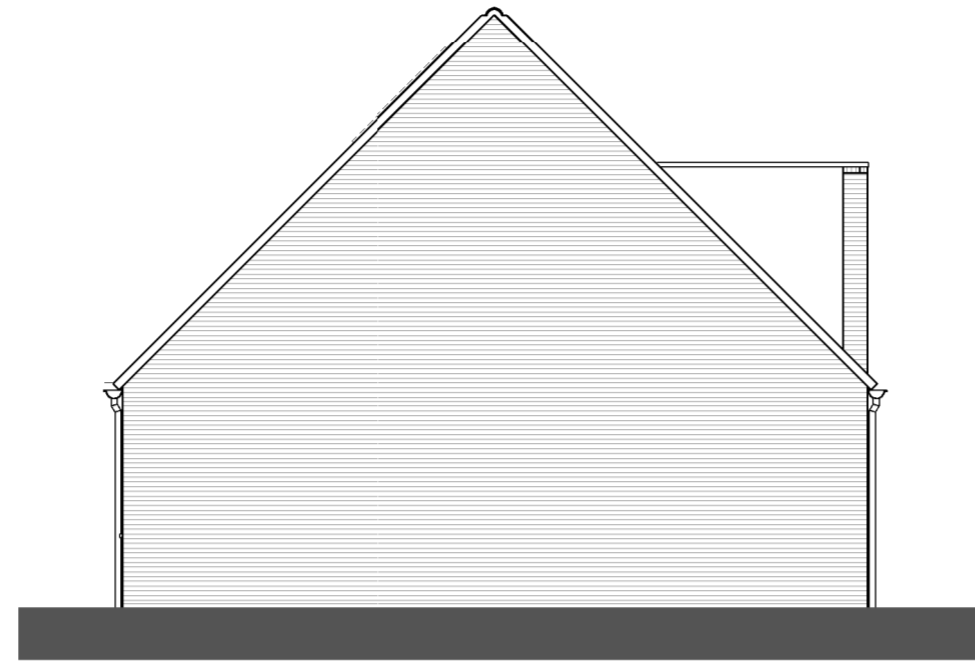


Situatie-overzicht



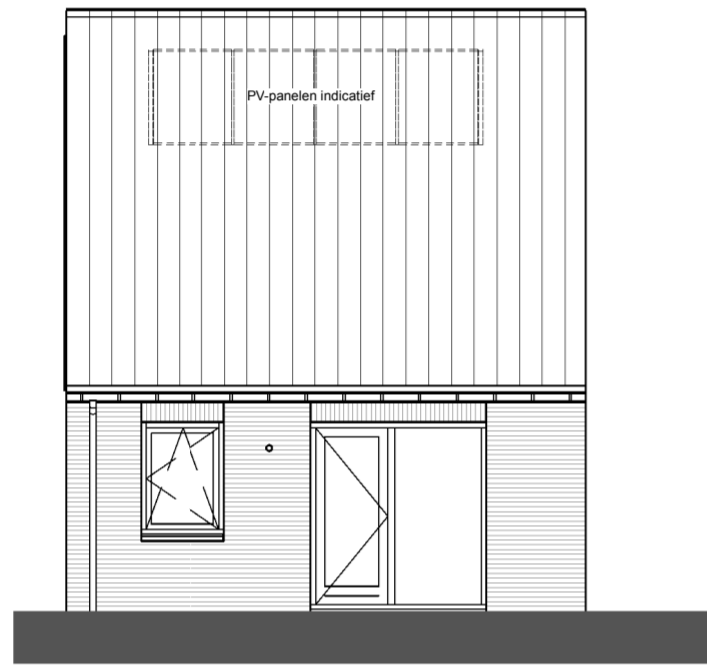
Voorgevel

1 : 100



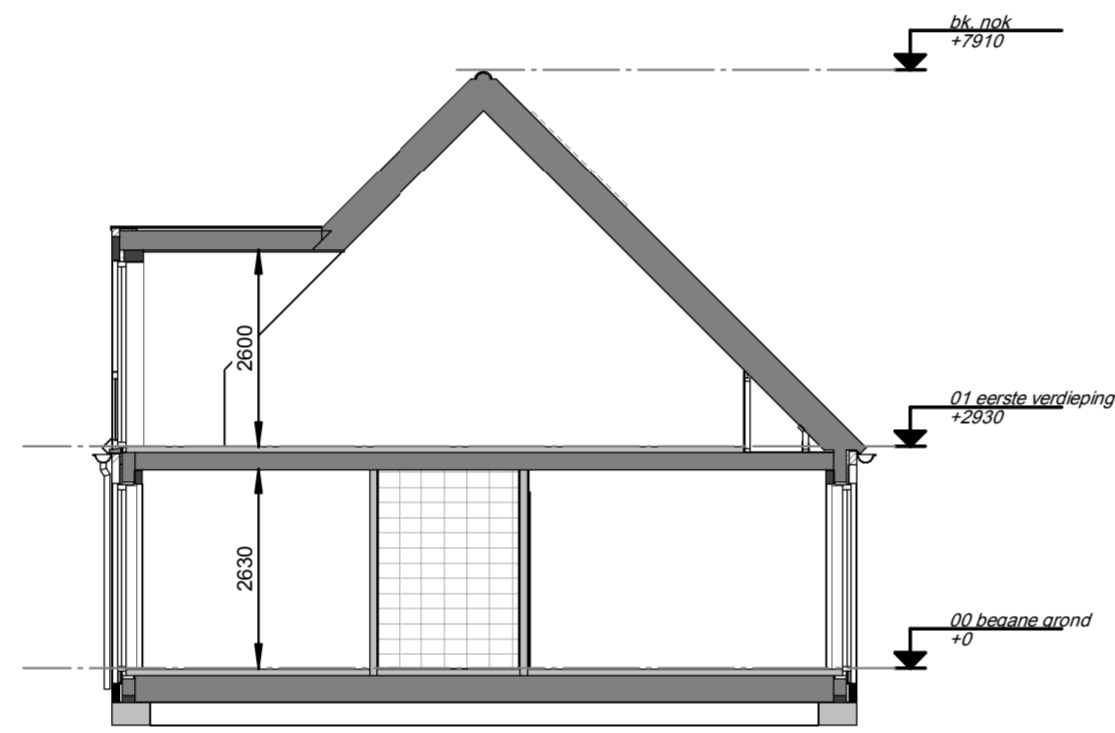
Linkergevel

1 : 100



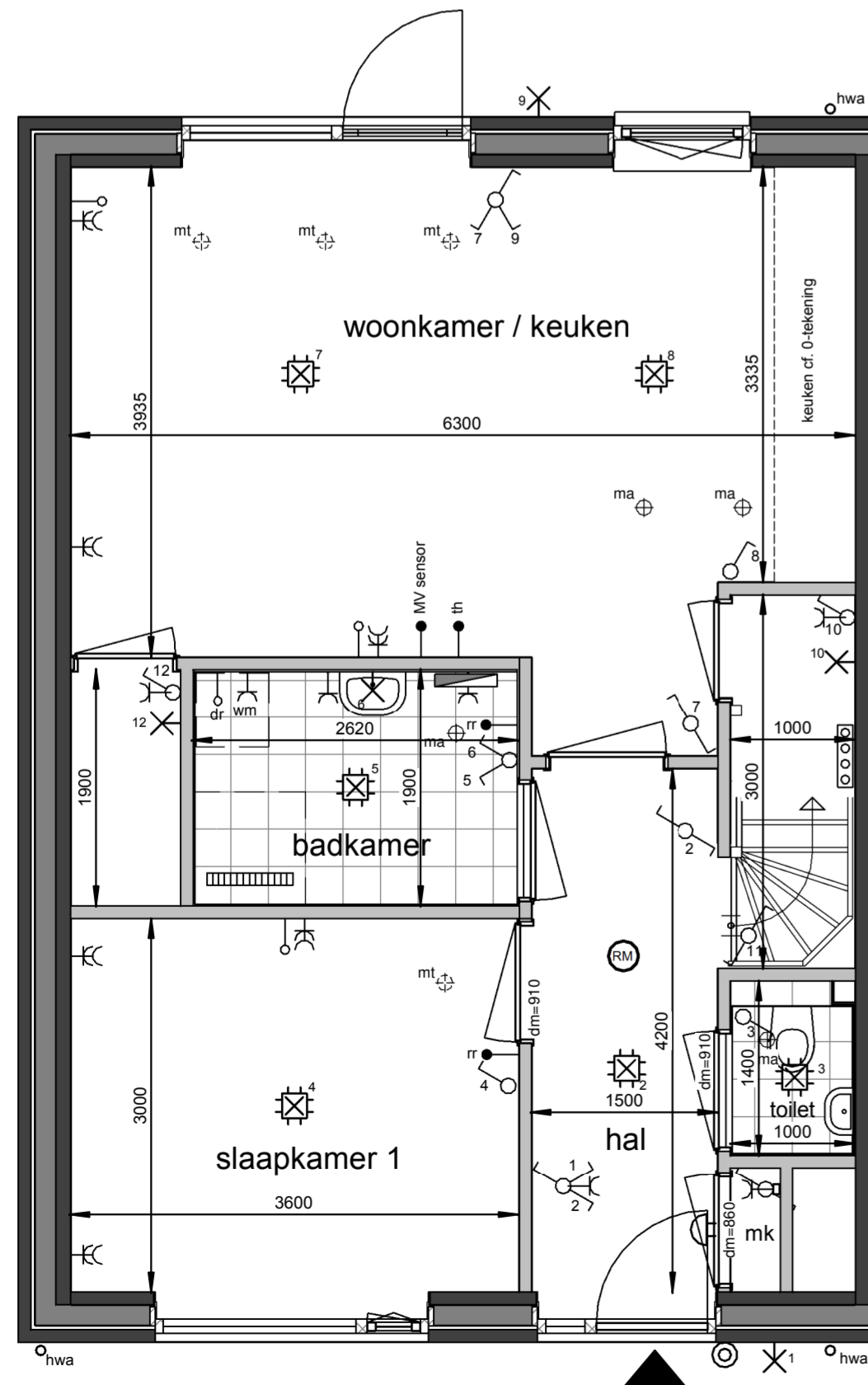
Achtergevel

1 : 100



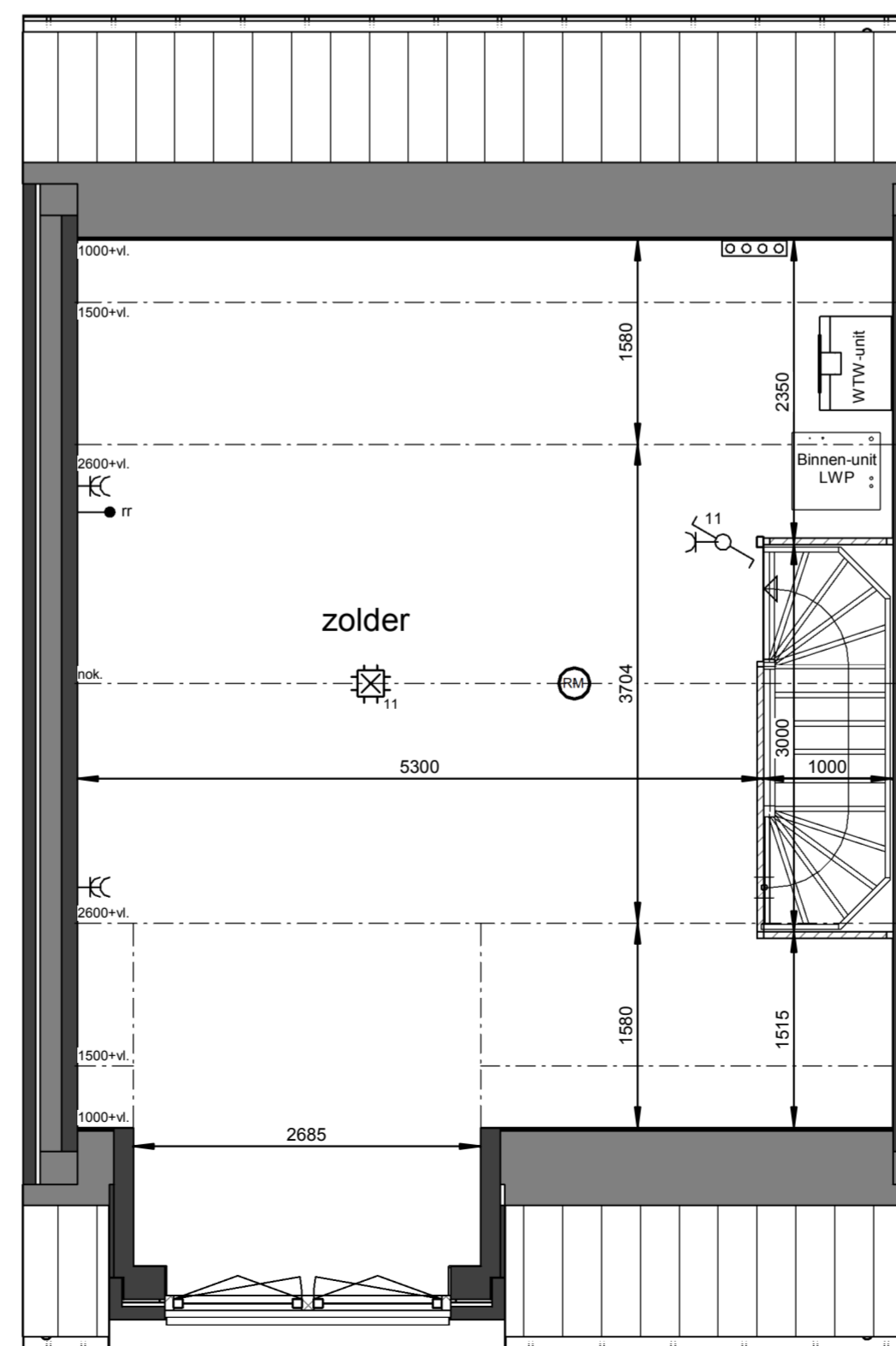
Doorsnede

1 : 100



Begane grond




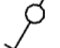









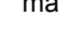
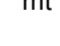
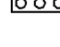
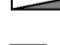


1 : 50



Eerste verdieping

1 : 50

Renvooi

-  plafond-lichtpunt
-  wand-lichtpunt
-  enkele schakelaar
-  wisselschakelaar
-  enkele wandcontactdoos
-  dubbele wandcontactdoos
-  bediening thermostaat
-  bediening MV
-  ruimteregelaar
-  onbedrade leiding
-  bedrukker
-  schel, voordeur bel
-  rookmelder
-  ma ⊕ plafond-afvoerventiel mechanische ventilatie
-  mt ⊕ plafond-toevoerventiel mechanische ventilatie
-  verdeler vloerverwarming
-  E-radiator
-  opstelplaats wasmachine / wasdroger
-  entree woning

Maatvoering in plattegronden zijn 'circa' maten.
Leidingen en kanalenverloop conform opgave installateur.
Elektra en installaties worden conform opgave installateur uitgevoerd.
Posities ventielen mechanische ventilatie zijn indicatief.
Posities WP, WTV en omvormer zijn indicatief.
Zonnepanelen indicatief weergegeven, aantal conform berekening.

Roermond, 28 woningen Neeldervelt

Woningtype K - Verkooptekening

datum: 16-05-2023 schaal: 1:100 / 1:50 papierformaat: bladnr.: A1- B-VK-K-0